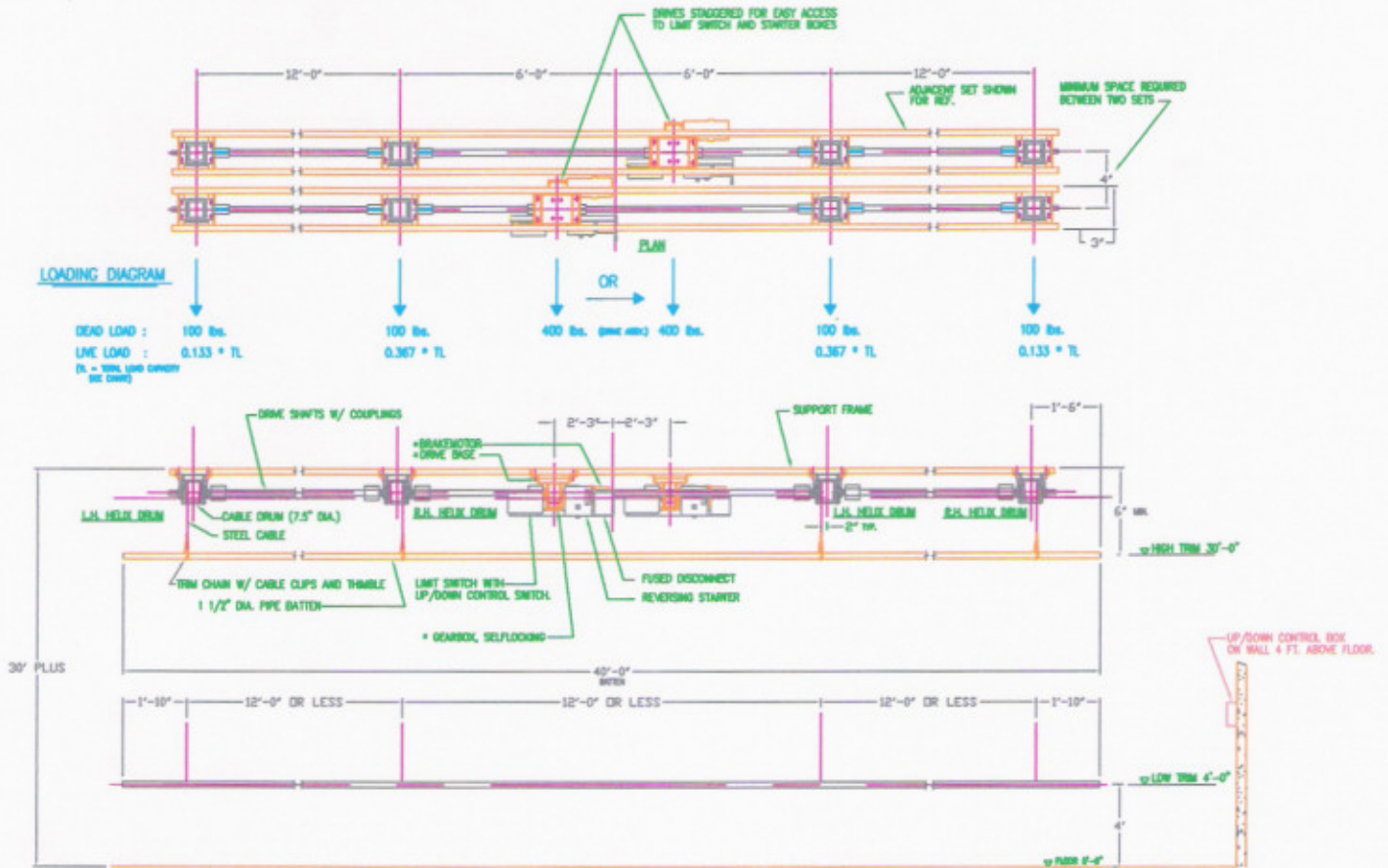


LINE SHAFT SYSTEM SERIES - 653Z (SELF-CONTAINED)



653Z LINE SHAFT HOIST SPECIFICATIONS									
HOIST MODEL	TOTAL SHAP CAP. LBS. (MAX)	LOAD CAP. LBS.	SPEED F.P.M.	# OF DRUMS	CABLE DIA. INCHES	TRAVEL FT.	BATTERY LIFETIME FT. (MAX)	DRUM DIA. IN.	MOVIE SP.
1.2.4.3	300	430	33	4	3/16"	30'-0"	40'-0"	7.5"	0.75
2.2.4.3	1200	1110	33	4	3/16"	30'-0"	40'-0"	7.5"	1.5
3.2.4.3	1500	1580	33	4	1/4"	30'-0"	40'-0"	7.5"	3.0
4.2.3.3	2675	2618	33	5	1/4"	30'-0"	30'-0"	7.5"	3.0
5.2.7.3	4800	4372	33	7	1/4"	30'-0"	30'-0"	7.5"	5.0

Engineered technologies for the world of entertainment.

Peter Albrecht Company, Inc.
6250 Industrial Court
Greendale, WI 53129-2432 USA

Phone: 414-421-6630
Phone: 800-878-6630
Fax: 414-421-9091

Web Site: www.peteralbrecht.com
E-Mail: sales@peteralbrecht.com

- Eliminates side loading of structure
- Can be underhung or floor mounted
- Custom sizes available and variable speed available
- Manufactured in 20' segments for ease of installation
- Specifications available